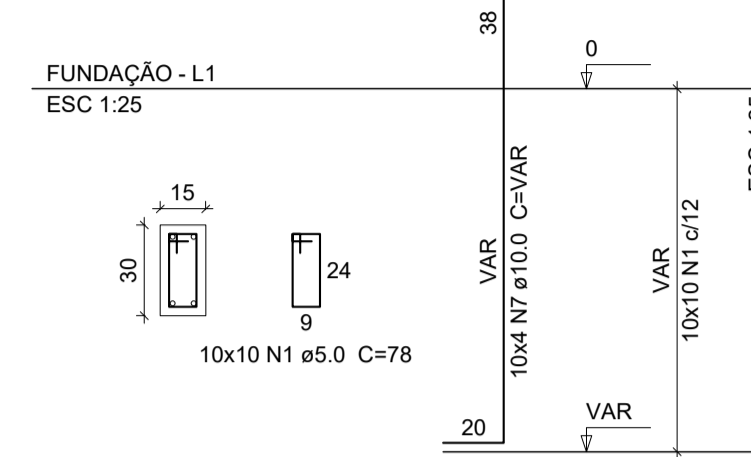
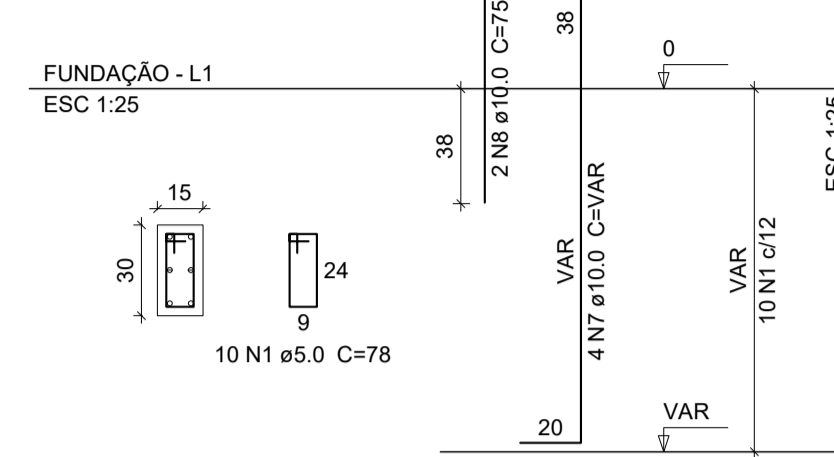


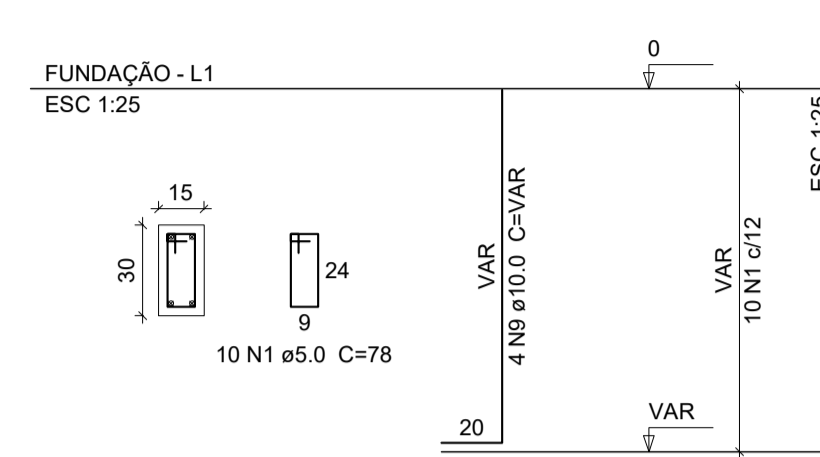
P1=P2=P5=P10=P12=P15=P19=P20=P23=P35



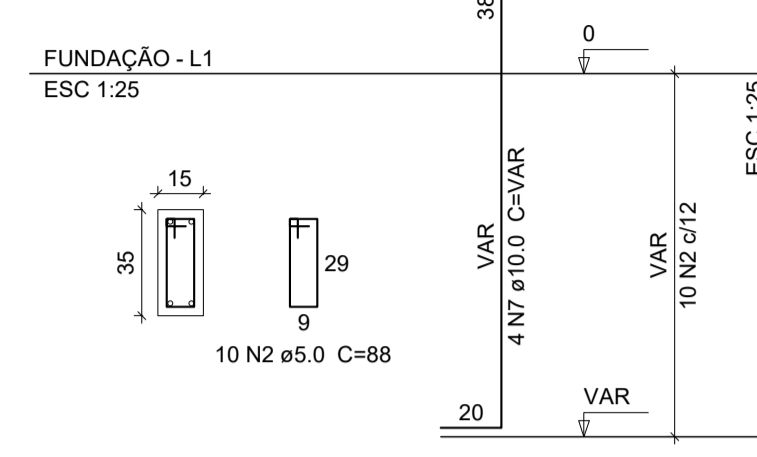
P32



P36

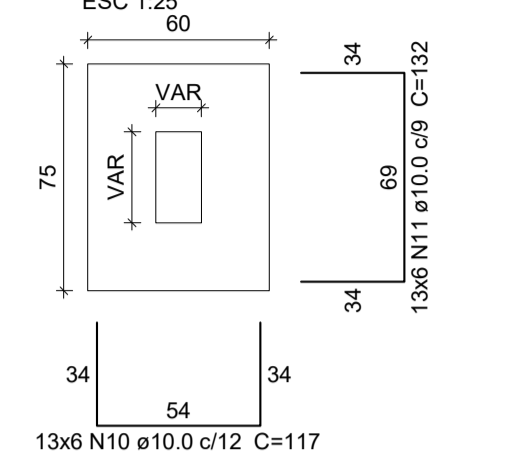


P7

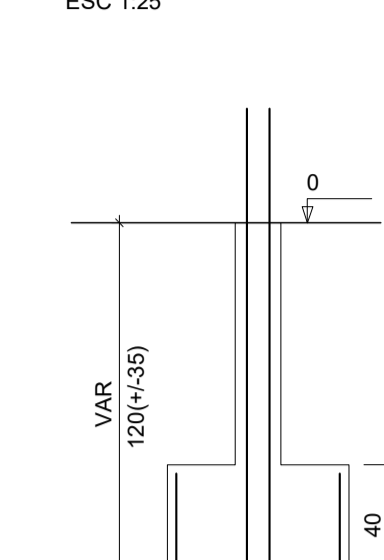


S1=S2=S5=S7=S10=S12=S15=S19=S20=S23=S32=S35=S36

PLANTA ESC 1:25



CORTE ESC 1:25



Solo com capacidade de suporte > 2.00 kgf/cm²
Solo compactado sobre a sapata
peso específico > 1600.00 kgf/m³

Relação do aço

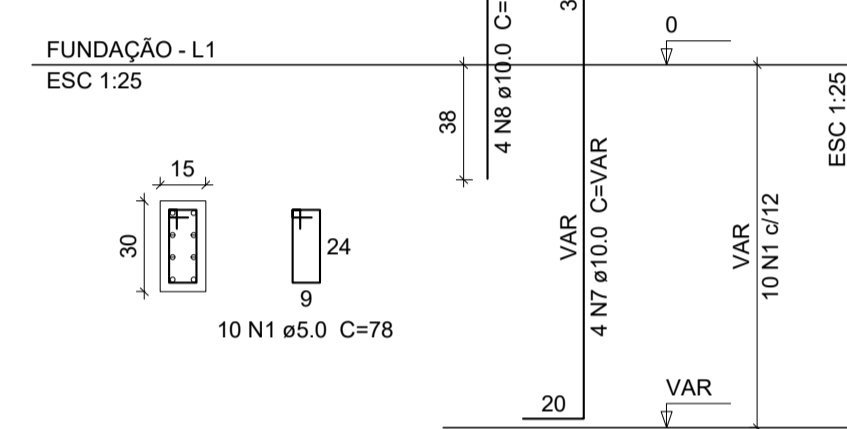
CAO	N	DIAM	Q	UNIT (cm)	C.TOTAL (cm)
CA60	1	5.0	160	78	12480
CA60	2	5.0	10	88	880
CA50	3	8.0	24	143	3432
CA50	4	8.0	18	158	2844
CA50	5	8.0	20	138	2760
CA50	6	8.0	18	153	2754
CA50	7	10.0	64	VAR	VAR
CA50	8	10.0	8	75	600
CA50	9	10.0	4	VAR	VAR
CA50	10	10.0	78	117	9126
CA50	11	10.0	78	132	10296

Resumo do aço

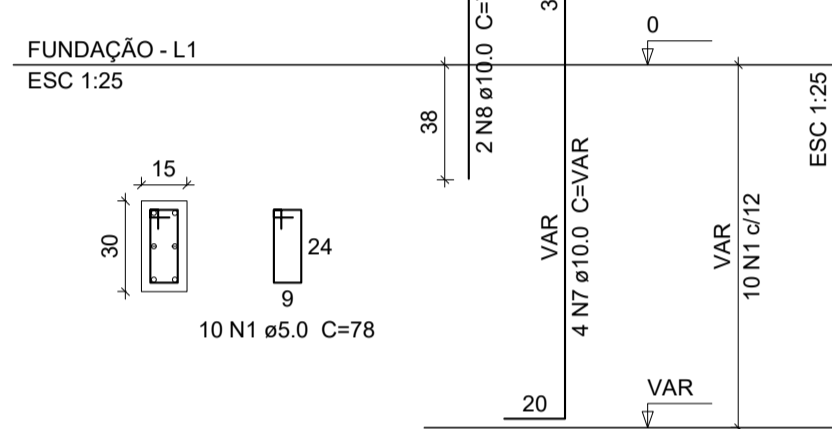
CAO	DIAM	C.TOTAL (m)	PESO + 10% (kg)
CA50	8.0	117.9	51.2
CA60	10.0	318.3	215.8
CA60	5.0	133.6	22.7
PESO TOTAL			
CA50		267	
CA60		22.7	

Vol. de concreto total (C-25) = 4.55 m³
Área de forma total = 38.28 m²

P22

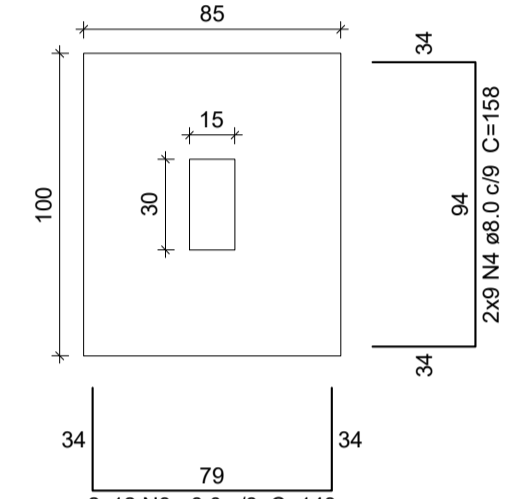


P24

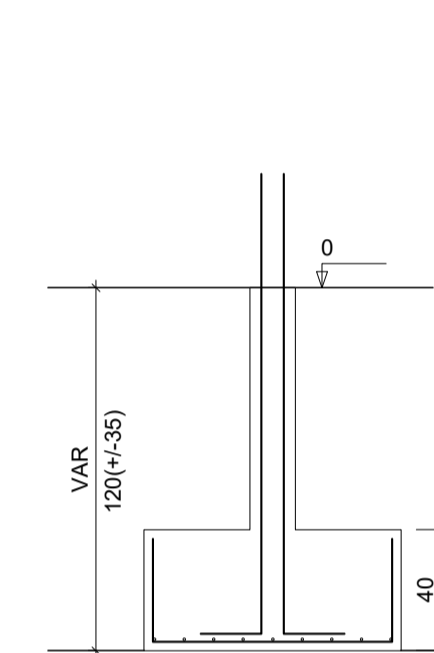


S22=S24

PLANTA ESC 1:25

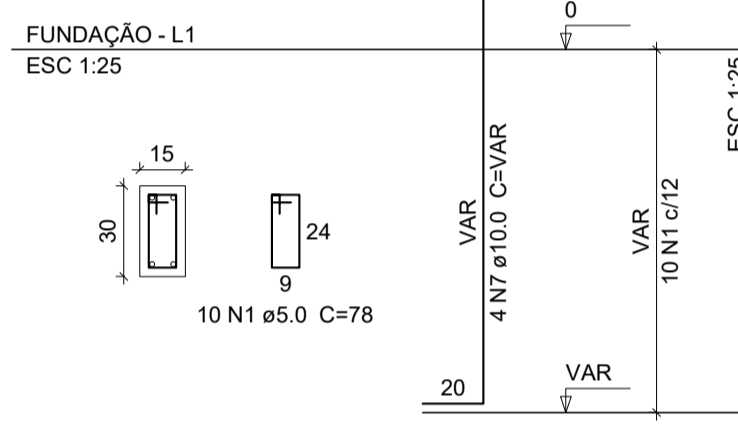


CORTE ESC 1:25



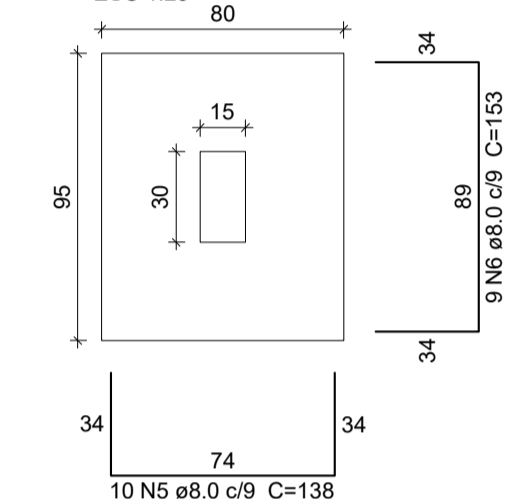
Solo com capacidade de suporte > 2.00 kgf/cm²
Solo compactado sobre a sapata
peso específico > 1600.00 kgf/m³

P27=P29

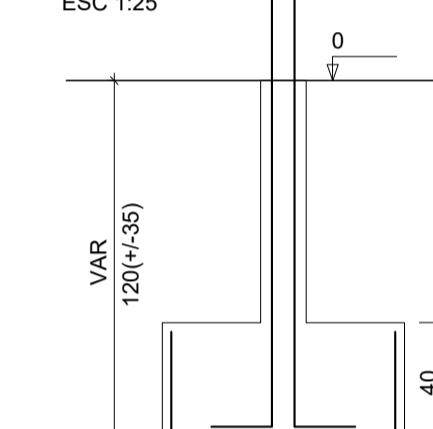


S27=S29

PLANTA ESC 1:25

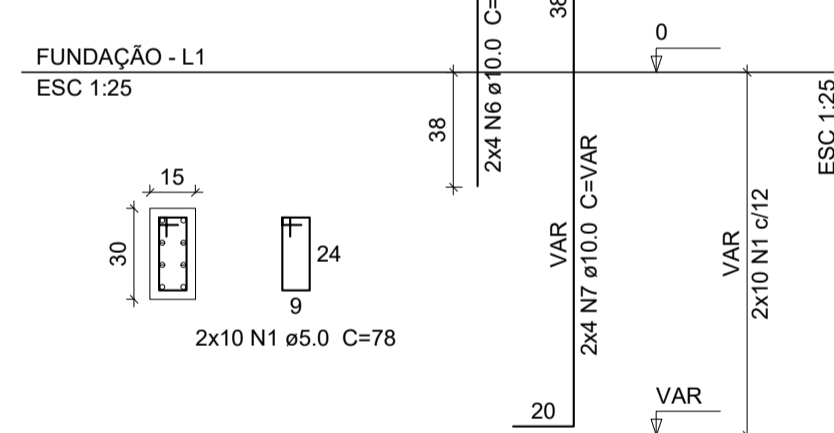


CORTE ESC 1:25

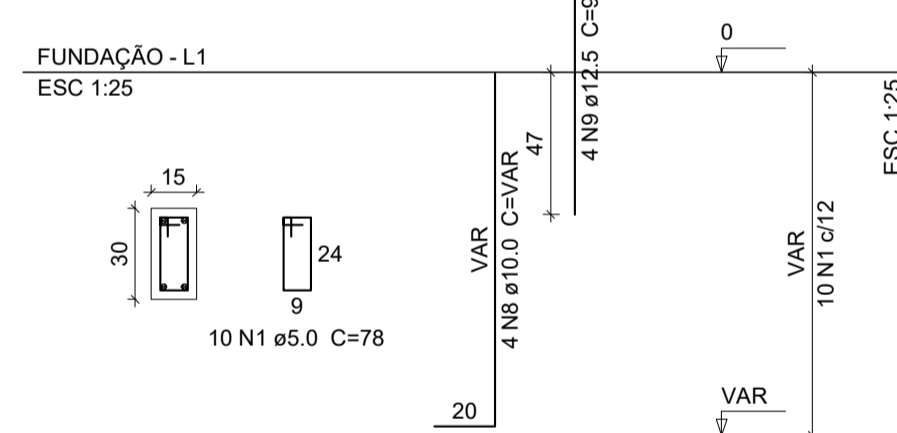


Solo com capacidade de suporte > 2.00 kgf/cm²
Solo compactado sobre a sapata
peso específico > 1600.00 kgf/m³

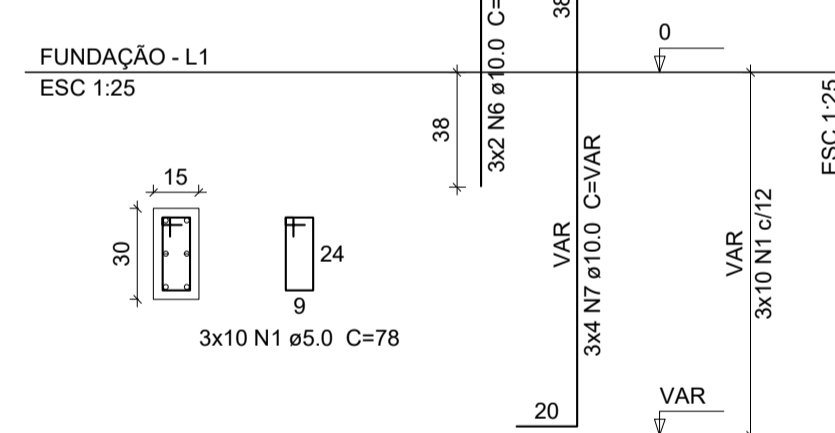
P13=P31



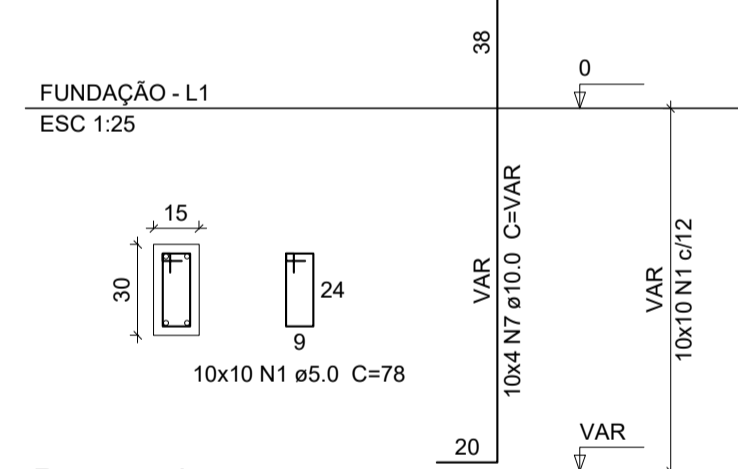
P14



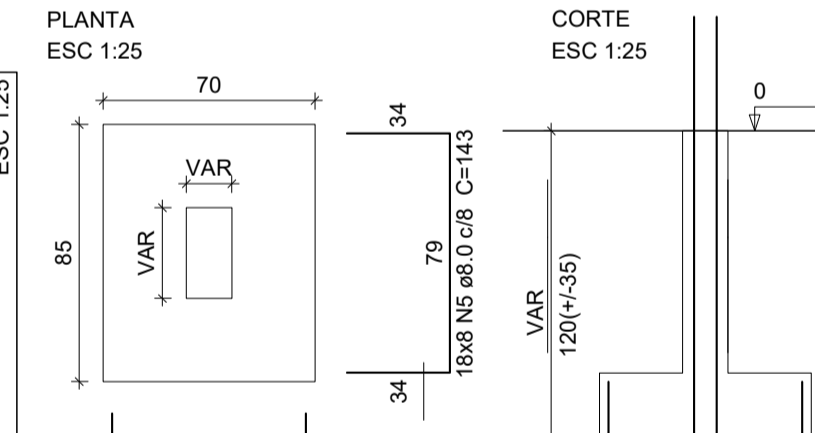
P3=P8=P17



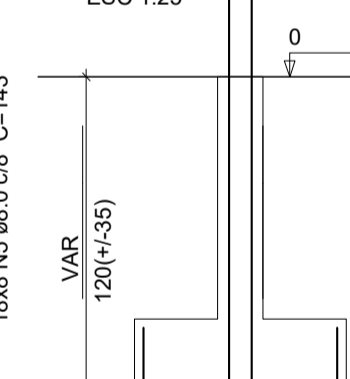
P4=P6=P11=P16=P18=P26=P30=P33=P34=P37



S3=S4=S6=S8=S9=S11=S13=S14=S16=S17=S18=S21=S26=S30=S31=S33=S34=S37



CORTE ESC 1:25



Resumo do aço

CAO	DIAM	C.TOTAL (m)	PESO + 10% (kg)
CA50	8.0	436.4	189.4
CA50	10.0	137.5	93.2
CA50	12.5	11.3	12
CA60	5.0	146.8	24.9
PESO TOTAL			
CA50		294.6	
CA60		24.9	

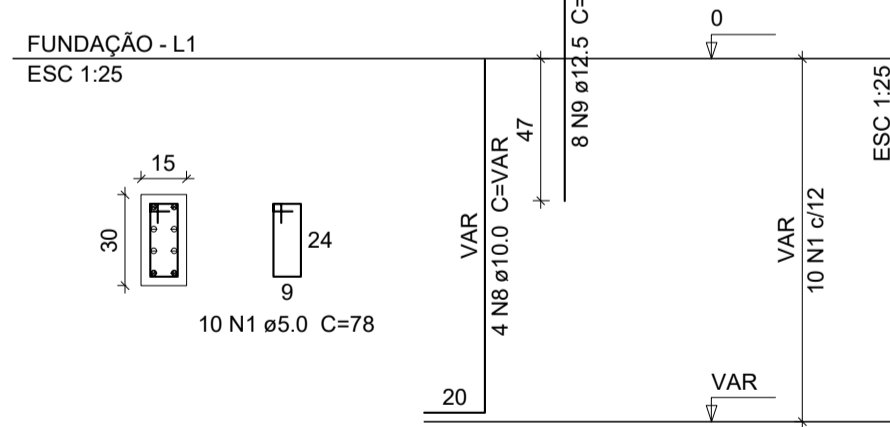
Vol. de concreto total (C-25) = 5.31 m³
Área de forma total = 42.12 m²

Relação do aço

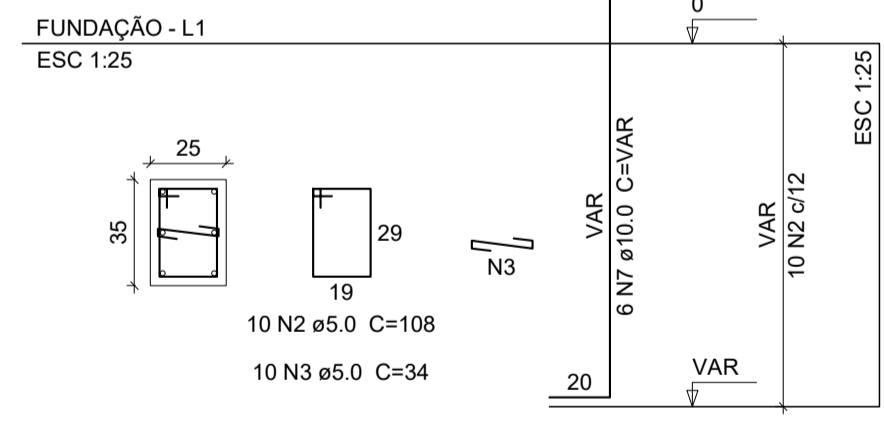
CAO	N	DIAM	Q	UNIT (cm)	C.TOTAL (cm)
CA60	1	5.0	170	78	13260
CA60	2	5.0	10	108	1080
CA60	3	5.0	10	34	340
CA50	4	8.0	180	128	23040
CA50	5	8.0	144	143	20592
CA50	6	10.0	14	75	1050
CA50	7	10.0	66	VAR	VAR
CA50	8	10.0	8	VAR	VAR
CA50	9	12.5	12	94	1128


Solo com capacidade de suporte > 2.00 kgf/cm²
Solo compactado sobre a sapata
peso específico > 1600.00 kgf/m³

P21



P9



RESERVADO PARA LOGOTIPO DO PROFISSIONAL	 <p>Prefeitura Municipal de Quartel Geral Administração 2021-2024 CNPJ: 18.296.699/0001-44 Rua Hipólito Pinto, 240 - Centro Quartel Geral, Minas Gerais, CEP. 35625-000- Minas Gerais</p>	
APROVAÇÃO	PREFEITURA MUNICIPAL DE QUARTEL GERAL	
TÍTULO	PROJETO ESTRUTURAL - CENTRO DE FISIOTERAPIA	
LOCALIZAÇÃO	ÁREA DO LOTE:	1.159,40 M ²
	ÁREA CONSTRUÍDA:	262,38 M ²
	LOGRADOURO:	RUA MANOEL CAEIRO, S/N
	BAIRRO:	NOVO QUARTEL
LOCAL DA EDIFICAÇÃO	CIDADE:	QUARTEL GERAL
	UF:	MINAS GERAIS
PROPRIETÁRIO	DADOS	PREFEITURA MUNICIPAL DE QUARTEL GERAL CNPJ: 18.296.699/0001-44
	CARIMBO	
RESPONSÁVEL TÉCNICO	AUTOR DO PROJETO	LEONEL CESAR DE OLIVEIRA CREA/IMG: 256.330/D
	CARIMBO	
LOCAL DATA	QUARTEL GERAL, 04 DE OUTUBRO DE 2021	Escala: Indicada
CONTEÚDO	FUNDAÇÃO: PILARES E SAPATAS FUNDAÇÃO	FOLHA: 03/03 FORMATO: A1